


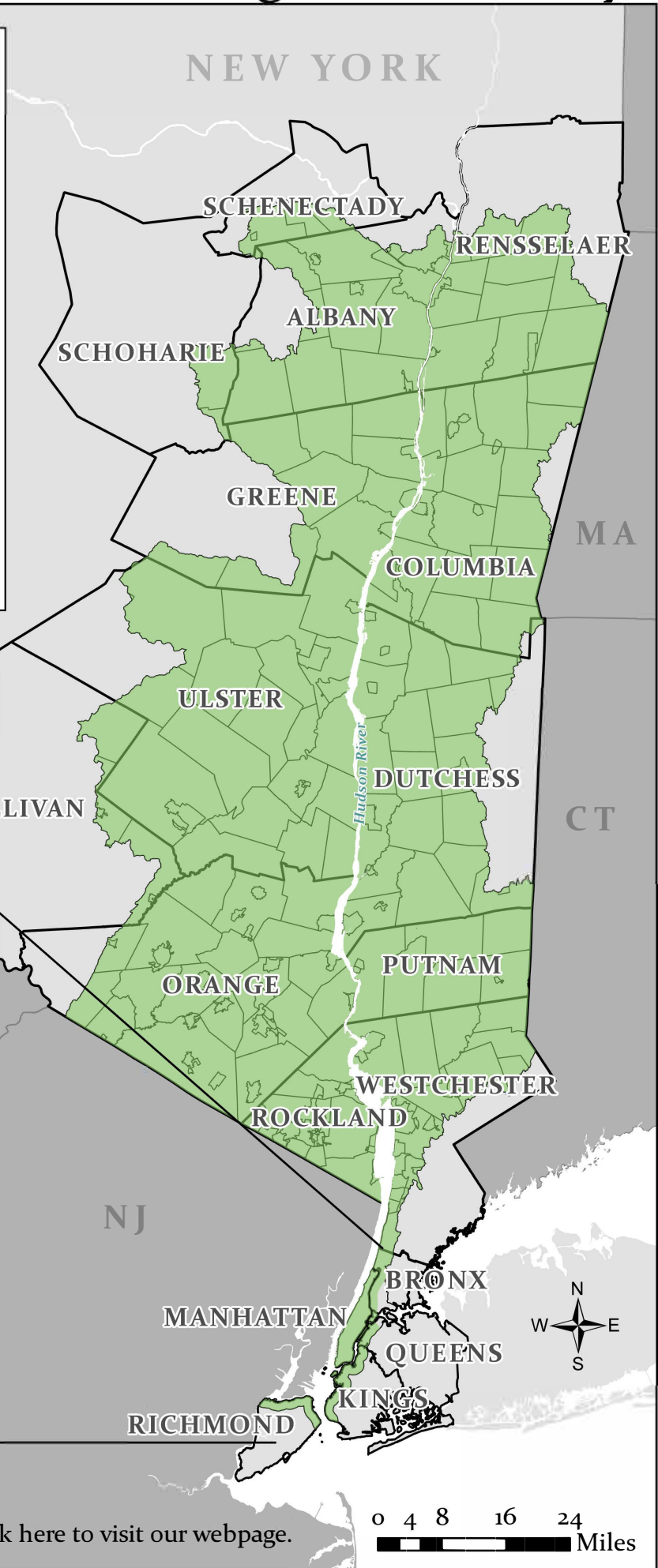
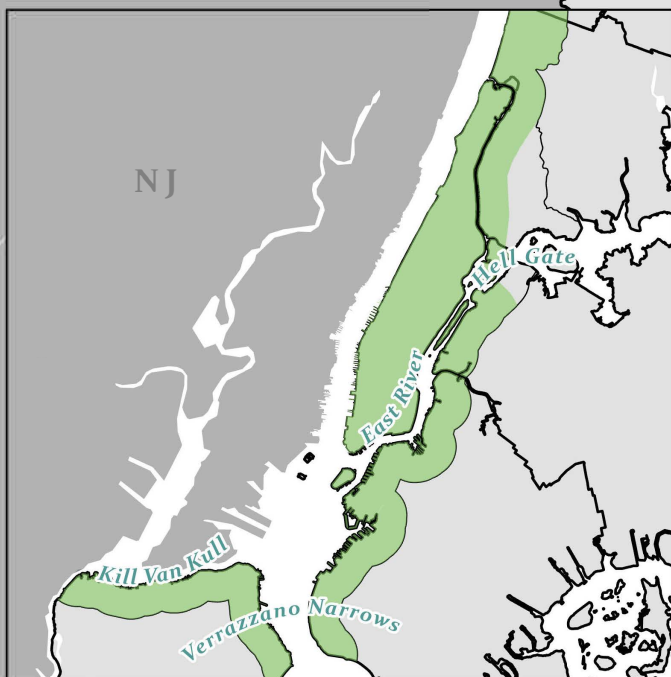
Hudson River Estuary Grants Program Boundary

For the purposes of protecting tributaries and upland habitat, the boundary establishing project eligibility for the DEC Hudson River Estuary Grants Program includes the watershed area of the counties within New York State draining to the Hudson River from the Verrazano Narrows bridge to the Troy dam and tributaries including the East River to Hell Gate, the Harlem River, and Kill Van Kull. A boundary of approximately 5,280 feet (1 mile) has been established as a general guideline for projects in Richmond, Kings, and Queens counties.

You may explore the Grants Boundary in more detail by using the Hudson Valley Natural Resource Mapper:

<https://gisservices.dec.ny.gov/gis/hvnrmm/>

 Hudson River Estuary Grants Boundary



Department of Environmental Conservation

Hudson River Estuary Program

[Click here to visit our webpage.](#)

0 4 8 16 24 Miles